



• Child Support Service

• Who may apply/applicant

- Custodial parent living with underage child under the Act on Enforcing and Supporting Child Support Payment
- Custodial parent or grandparent family with underage* child under the Single-Parent Family Support Act
 - * Custodial parent or grandparent family who has custody of a child in school under 22 or a child returning to school after military service (under 22 + military service period)
- ※ Unmarried custodial parent, as well as divorced parent, may also be supported
- Establishing paternity (legally identifying the father of a child) is provided if needed.

• Service provided

- Support for counseling and agreement on child support payment
- Legal action to establish child support court order
- Enforcing the child support order by collection
- Monitoring on child support payment, sanction and field investigation on non-custodial parent if fails to carry out his or her child support order on a timely basis
- Access and Visitation programs for needed families
 - ※ Operating 14 centers nationwide (Seoul, Ansan, Incheon, Jeonju, Cheonan, Daejeon, Daegu, Cheongju, Busan, and Jeju)
- Emergency Assistance for temporary child support
 - ※ KRW 200,000 per child per month up to 12 months (Inquiry: ☎1644-6621)

• Counseling and inquiry

- Child Support Agency : www.childsupport.or.kr
- Child support consultation : 1644-6621 (Extension 1)

• How to apply

- 1) Download "Application for Child Support Services" in Data Room of the website (www.childsupport.or.kr)
- 2) Submit "Application for Child Support Services" and additional documents (registered mail or visit)

Counseling on connection with related services and policies for support for the happy life of diverse families

Pregnancy and childbirth conflict counseling (#0)

Counseling on psycho-emotional support for conflicts on pregnancy and delivery, provision of information on support projects, and connection with professional service agencies
※ Operation time: 24 hours a day, 365 days a year

Child support consultation (#1)

Counseling on child support for custodial parent and non-custodial parent
※ Operation time: 09:00 - 18:00 from Monday to Friday (Off on weekends and holidays)

Single-parent family counseling (#2)

Integrated information counseling on support projects, etc. for single-parent or unmarried-mother/father families
※ Operation time: From 8:00 to 22:00, 365 days a year

Family service consultation (#3)

Guide to family policy services for government support policies and child care support projects, etc. and initial counseling on family conflicts
※ Operation time: From 8:00 to 22:00, 365 days a year

Counseling through KakaoTalk chatting

QR code scanning with cameras
※ KakaoTalk Plus Friend
Family counseling call of the Korean Institute for Healthy Family



• Danuri Helpline: 1577-1366

(Multicultural Family General Information Call Center)

Interpretation (third-party call) in 13 languages for emergent support, counseling, and life information
※ Operation time: 24 hours a day, 365 days a year

• If you want to know more about the Korean Institute for Healthy Family and family services,

Website	www.kihf.or.kr
Youtube	www.youtube.com/c/kihfkorea
Instagram	www.instagram.com/kih_f_korea
Facebook	www.facebook.com/kih7600
Blog	blog.naver.com/pinacho1

Address

[06578] 5F, Child Support Agency, Korean Institute for Healthy Family, 217, Banpo-daero, Seocho-gu, Seoul

KIHF

KOREAN INSTITUTE FOR HEALTHY FAMILY

Korean Institute for Healthy Family

We try to enhance the expertise of family services

We support diverse families for a stable life

● Overview of the Korean Institute for Healthy Family

The Korean Institute for Healthy Family is a public agency founded to realize the happiness of all families in Korea by efficiently and systematically supporting family policy services.

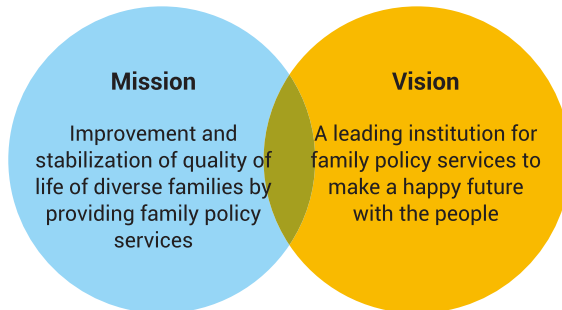
● Background of foundation / Article 34-2 of the Framework Act on Healthy Families

The Korean Institute for Healthy Family is founded to support family policies efficiently and systematically in order to improve the quality of life of diverse families and strengthen the capabilities of families.

● History

- Jan. 2005 ▶ Opened the Central Healthy Family Support Center
- Aug. 2011 ▶ Founded the Korean Institute for Healthy Family (Foundation)
- Jan. 2015 ▶ Founded the Korean Institute for Healthy Family (Special Corporation)
- Mar. 2015 ▶ Operation of the Child Support Agency
- Feb. 2020 ▶ Designated as a quasi-governmental institution

● Mission and vision



Address [06578] 4F-6F, Korean Institute for Healthy Family
217, Banpodae-ro, Seocho-gu, Seoul

Main phone 02-3479-7600

● Planning family services and supporting the central management of regional centers

- R&D and consulting for family services
- Support for the foundation of resident-friendly family center (Life SOC)
- Family service users satisfaction survey
- Certification of divorce counseling agencies with good achievement
- Management of family centers, healthy family support centers, and multicultural family support centers

- ▶ Family center: www.familynet.or.kr
- ▶ Family center SOC: soc.kihf.or.kr
- ▶ Main phone: 1577-9337

● Education for staffs of family services to strengthen their capabilities.

- Education for staffs of family services
- Development and distribution of customized education contents
- Operation of an online education center

- ▶ Online education center : edu.kihf.or.kr

● Construction and activation of big data for family services

- Collection, management, analysis, and use of family service data
- Production and management of statistics of family services

● Prior responses to social disasters and support for families in crisis

- Support the neglected child/youth families for the restoration of their functions
- Cooperation to respond to family crisis
- Coping with the occurrence of family crisis from social disasters
- Preventing social disasters and providing emergency training

● Improvement of recognition of diverse families

- Education and campaigns to improve the recognition of family diversity
- Monitoring to relieve the prejudice against family diversity
- Production of contents of information on family types

- ▶ Danuri Portal: www.liveinkorea.kr

A portal site that provides multicultural families with basic information for adaptation to life in Korea and recent information on other cultures in 13 languages

- ▶ Danuri Learning Center: www.danurischool.kr

An education platform that introduces professional lecturers to promote understanding of family diversity (multiple cultures and diverse families), to request for education, and to provide online education

● Formation of a family-friendly social environment

- Dispersion of work-family balance culture with enterprises (governments)
- Consulting on family-friendliness and workplace training
- Formation of a family-friendly environment through win-win cooperation by local societies

- ▶ Family-friendly support projects: www.ffsb.kr

● Solving the care gap for family

• Operating CCSC(The Cental Childcare Support)

- R&D on child care
- Supporting the operation of regional childcare support centers, the childcare service agencies, and the babysitter education centers
- Training the staff of the centers and the agencies
- Planning and carrying out projects related to childcare

• Childcare Service Use Guide

- Main phone : 1577-2514
- Website : www.idolbom.go.kr
- Inquiry in website: 1577-8136

• Support for child care community agents and expansion of network

- My village Child Care Community: www.dolbomnetwork.kr